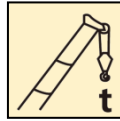


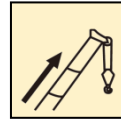
QY25K5-II汽车起重机 / Truck Crane

产品简介

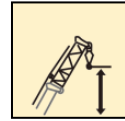
Brief introduction



25 t



40 m



47.4 m



XCMG official Platform
www.machmall.com/
machmall@xcmg.com

 Machmall.com

Web: machmall.com
Tel: +86-516 8773 9797
E: machmall@xcmg.com

2020年02月01版

**QY25K5-II广泛适用于建筑工地、城市改造、交通运输、港口、桥梁、油田、矿场等场所和其
它复杂的作业环境**

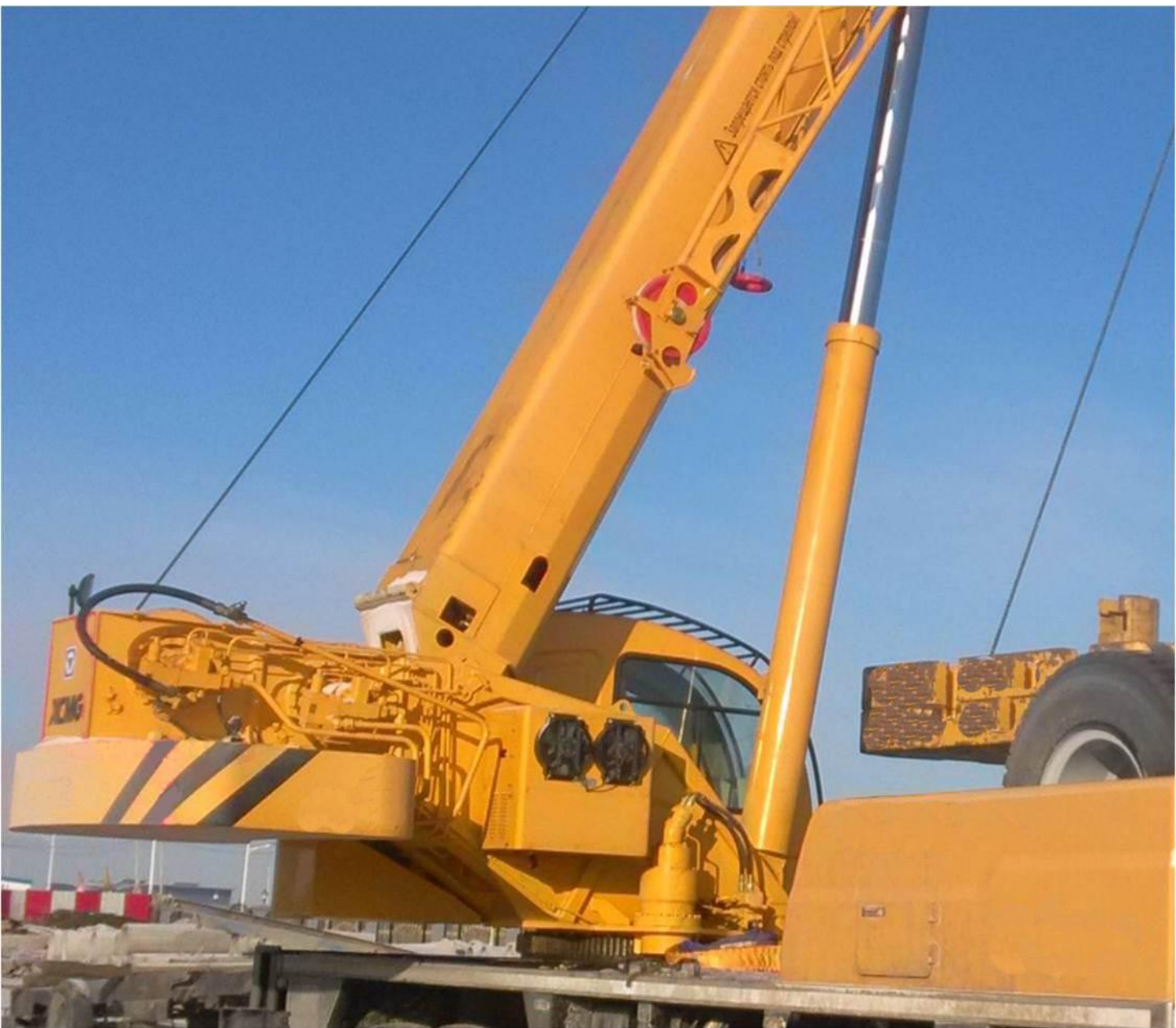
**QY25K5-II Truck crane is widely used for the lifting operations in general engineering projects,
such as construction site, urban renewal, communication and transportation, ports, bridge,
oilfields and mine, and complex working environments.**



QY25K5-II 经典传承，品质典范！

- 五节 八边形 40.0米主臂，最大起重能力：25吨，最大起升高度：47.4米，最大工作半径：32米
- 5-section boom of 40.0 m with octagonal cross section is adopted; the max. lifting load is 25 t; the max. lifting height is 47.4 m; the max. working radius is 32 m.
- 先导控制负载敏感液压系统，系统稳定、能耗低
- Load sensitive hydraulic system controlled by pilot hydraulic fluid, which brings stable performance and lower power consumption.





回转机构

Slewing mechanism

- 单排四点接触球外齿式回转支承, 360度回转
- Single-row four-point ball contact external tooth slewing ring, may continuously slew 360°.
- 先导式负载敏感液压系统
- Load sensitive hydraulic system controlled by pilot hydraulic fluid
- 具有动力控制或自由回转的功能, 可无级调速
- Power control and free-sliding function are available, and speed may be infinitely regulated
- 回转速度为0-2.5r/min
- Slewing speed 0-2.5r/min



QY25K5-II 经典传承，品质典范！



超强的起重性能

Super lifting performance

- 五节 八边形 40米主臂，双缸绳排伸缩机构，基本臂最大起重力矩961kN.m，最长主臂起重力矩553kN.m；
- 5-section boom of 40 m with octagonal cross section; double-cylinder plus ropes telescoping mechanism ; max load moment of base boom is 961 kN.m , and that is 553 kN.m of fully extended boom.
- 先进的嵌入式臂头，结构件强度大，下滑块面积大，受力状况更好，伸缩更平稳。
- Advanced build-in boom head, strong structural members and lower sliders with larger area contribute to better stress-bearing capacity and smooth telescoping movement.



成熟的负载敏感液压系统

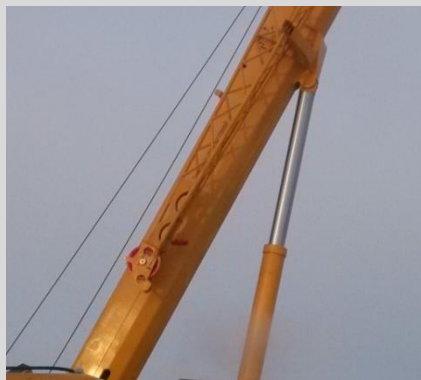
Mature load sensitive hydraulic system

- 先导控制负载敏感技术的成熟应用，使系统不受负载压力变化和油泵流量变化的影响，实现调速的目的，降低系统能耗，减小系统发热，延长液压系统使用寿命。
- With pilot controlled load sensitive technique, hydraulic system could not be influenced by variation of load pressure and flow of pumps, so as to control speed, reduce energy consumption and heating, increase the working life.
- 独特的回转缓冲技术，使流量、压力精确控制，有效提高回转操作平稳性。
- Unique slewing buffer technology ensures precisely control of flow and pressure, which leading to smooth slewing movement.

起升机构

Hoisting mechanism

- 定量泵-变量马达液压系统
- Hydraulic system consisting of constant displacement pumps and variable displacement motors
- 行星齿轮减速器、常闭式制动器
- Planetary gear reducer, normally closed brake
- 最大单绳拉力为29KN
- Max. single line pull 29KN
- 最大起升速度125m/min
- Max. hoisting velocity 125m/min



变幅机构

Elevating mechanism

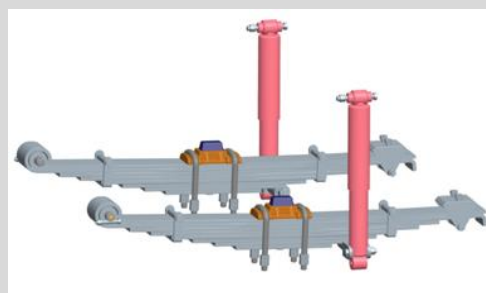
- 单变幅油缸，可靠性高
- Single elevating cylinder, high reliability
- 使用带负载补偿功能的变幅平衡阀
- The elevating balance valve with load compensation function



动力传动系统

Drive train

- 上柴发动机，额定功率221kw，最大输出扭矩1250N.m
- Shanghai diesel engine, rated power 221kw, max. torque 1200N.m
- 陕齿机械变速箱，软轴操纵，全同步器
- Mechanical transmission made by Shanxi Gear Factory, with synchronizer. It is manually operated through flexible shaft.
- 最高车速80Km/h，最大爬坡能力40%
- Max. travel speed 80Km/h, Max. grade ability 40%



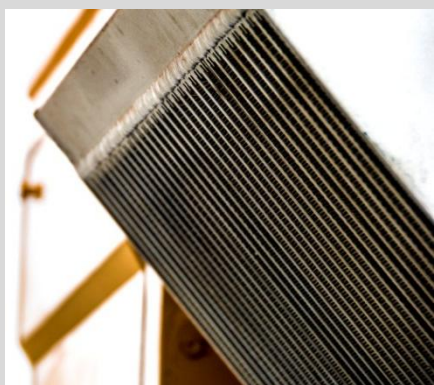
QY25K5-II 经典传承，品质典范！



散热器、液压阀优化设计，提升高温环境下作业可靠性

Optimum design of radiator and hydraulic valve, improving operation reliability in high temperature environment

- 优化散热器油口布置，增大散热器功率（18KW），散热性能提升15%，满足高温环境下连续作业要求
- Optimize the oil port arrangement of the radiator, increase radiator power(18KW).The heat dissipation performance is increased by 15%, which meets the requirement of continuous operation in high temperature environment.





操纵室

Operator's cab

- 全人机工学工作空间设计,作业更舒适,安全
- Ergonomically designed working space makes operation safer and more comfortable



QY25K5-II 经典传承，品质典范！

大圆弧操纵室

Large arc Operator's cab

- 大圆弧玻璃，装有安全玻璃和顶部保护栏
- Large arc glass, safety glass and top guard bar.



- 外开车门、可调式座椅
- Swing-out door and adjustable seat



力矩限制器

automatic moment limiter

- 配有力矩限制器，液晶显示器可清晰直观地以文字和图形方式显示起重作业参数，使各种工况一目了然；
- Equipped with load moment limiter, with LCD display, crane operation parameters can be displayed visually and clearly in text and graphic way



- 安全保护、吊装动作、操纵环境三个区域,控制便捷
- Three control areas for safely protection, hoisting operation and operating environment bring convenient control



Machmall.com is an electromechanical product platform officially launched by XCMG, aiming to provide global customers with a complete set of high-quality construction machinery solutions and supporting equipment.

Xuzhou Construction Machinery Group Co., Ltd. (XCMG Group), founded in 1943, is the fourth largest worldwide construction machinery manufacturer and the largest in China with products covering 183 countries and regions.

XCMG have 12 complete solutions: Crane lifting, Mining Construction, Earth-moving Solutions, Road Machinery, Concrete Equipment, Tunnel and Underground Space Construction, Mobile Elevating Work Platform (MEWP), Piling and Non-excavation Equipment, Transportation Equipment, Environmental Sanitation Equipment, Firefighting, Safety and Emergency Rescue



<https://www.machmall.com/>

machmall@xcmg.com

0086 18652183963
86-516 8773 9797